



Empire House, Thurloe Place,  
Knightsbridge, SW7

Asking Price £1,200,000, Leasehold

NAPIER WATT

T: 0207 935 0011  
E: [enquiries@napierwatt.co.uk](mailto:enquiries@napierwatt.co.uk)  
W: [napierwatt.co.uk](http://napierwatt.co.uk)

35 Berkeley Square, Mayfair, London, W1J 5BF







## Description

A spacious third floor apartment in a prestigious block with 24 hour porter. The flat is in excellent condition, and situated in the preferred part of the building, overlooking the gardens of Alexander Square. Comprising two double bedrooms, both with en-suites on the third floor of Empire House with leafy views down Alexander Square, the flat is filled with natural light and high ceilings. The apartment measures approximately 951 square feet (88.4 sq m). Additionally the building benefits from a 24 hour porter and the common parts have recently undergone a refurbishment. Empire House boasts a highly desirable and sought after location on the Brompton Road moments from the world famous Natural History and V & A Museum and only moments from Harrods.

Please note "The furniture depicted in the photos is a CGI rendering, provided solely for illustrative purposes."

EPC Rating C.

## Key Features

- 24 HOUR PORTER
- EXCELLENT CONDITION
- OUTSTANDING LOCATION
- PASSENGER LIFT

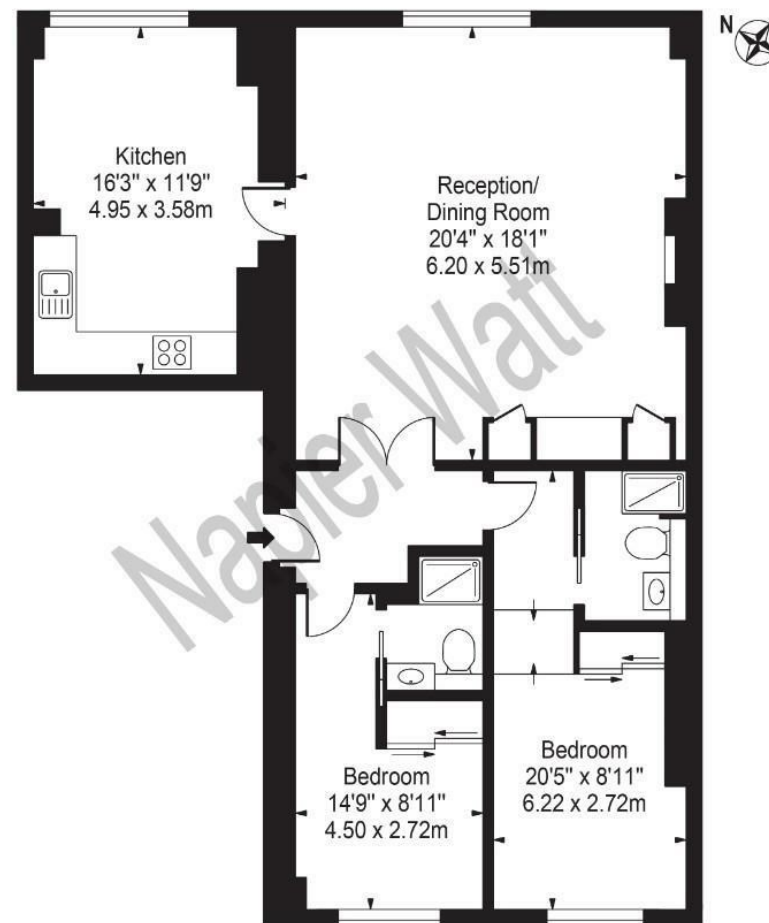
## Terms

Leasehold 61 Years Remaining.

Service Charge: £4,934.96 per quarter inclusive of reserve fund.

## Empire House

Approx. Gross Internal Area 954 Sq Ft - 88.63 Sq M



### Third Floor

For Illustration Purposes Only - Not To Scale

This floor plan should be used as a general outline for guidance only and does not constitute in whole or in part an offer or contract. Any intending purchaser or lessee should satisfy themselves by inspection, searches, enquiries and full survey as to the correctness of each statement. Any areas, measurements or distances quoted are approximate and should not be used to value a property or be the basis of any sale or let.

IMPORTANT: We would inform prospective purchasers that these sales particulars have been prepared as a general guide only. A detailed survey has not been carried out, nor the services, appliances and fittings tested. Room sizes should not be relied upon for furnishing purposes and are approximate. If floor plans are included, they are for guidance only and illustration purposes only and may not be to scale. If there are any important matters likely to affect your decision to buy, please contact us before viewing the property.